

GL offers distribution operators comprehensive software tools and services to manage underground infrastructure assets. Through decades of experience in providing asset management services to water distribution utilities we have developed methodologies and software tools to manage data associated with asset management programs. These tools have come together to form GL's newest solution, Essentials. Unlike larger, more costly, work management systems, Essentials focuses directly on managing your facilities and all aspects of your inspection and maintenance processes. This includes the automated scheduling of cyclical inspections, the assignment and management of field technicians, and a robust field computing environment for capturing inspection results and maintaining facility information.

Out-of-the-Box Integration with ESRI

Already maintain your assets in an ESRI GIS system? Great! Essentials integrates directly with ArcGIS to manage your inspection and maintenance activities. As assets are 'posted' or 'retired' from the GIS system, Essentials will create new inspection schedules or retire existing schedules to ensure that your field activities remain in sync with your 'as-built' network. With the ability to tightly integrate with your ESRI GIS or other ODBC compliant back-end IT systems, the Essentials toolset is the perfect solution for water utility inspection and maintenance activities.

Standardize Your Processes

Essentials supports a variety of business processes across many corporate departmental boundaries. Maintenance and upkeep of individual spreadsheets, personal databases, and paper records can be eliminated by managing the associated activities within Essentials. Essentials can manage a broad range of activities including: routine asset maintenance and inspection for both plant and field assets, water quality sampling, tracking and follow-up to taste and odour or other water quality complaints, operator certifications and continuing education, response and follow-up to main breaks, meter inspection and replacement, meter reading schedules and routes, etc. Gain peace of mind by knowing that your valuable planning and tracking information is secured in a comprehensive corporate enterprise database, and is being maintained by a set of tailored, yet standardized, business processes.

Comprehensive compliance and work scheduling

Your operations specialists and field technicians must ensure the integrity of your distribution system. Your company needs to maintain information for management oversight and to demonstrate compliance with regulatory agencies and internal guidelines.

Essentials automates and controls scheduled activities associated with your utility's assets. The software delivers detailed reporting and archiving capabilities to provide an audit trail that ensures compliance with internal policies and procedures, as well as any appropriate regulations.

Powerful productivity

Essentials helps you turn data into actionable intelligence. GL's solution allows you to improve decision-making across your company. Rely on Essentials for:

- Automated scheduling of cyclical inspections, operational changes, and maintenance activities
- Efficient field data collection – for both inspection results AND detailed asset data maintenance
- Alerts to signify abnormal asset conditions and water quality issues
- Scheduling and tracking of follow-up or repair activities, including water quality sampling
- Single enterprise solution supporting multiple, diverse departments and programs

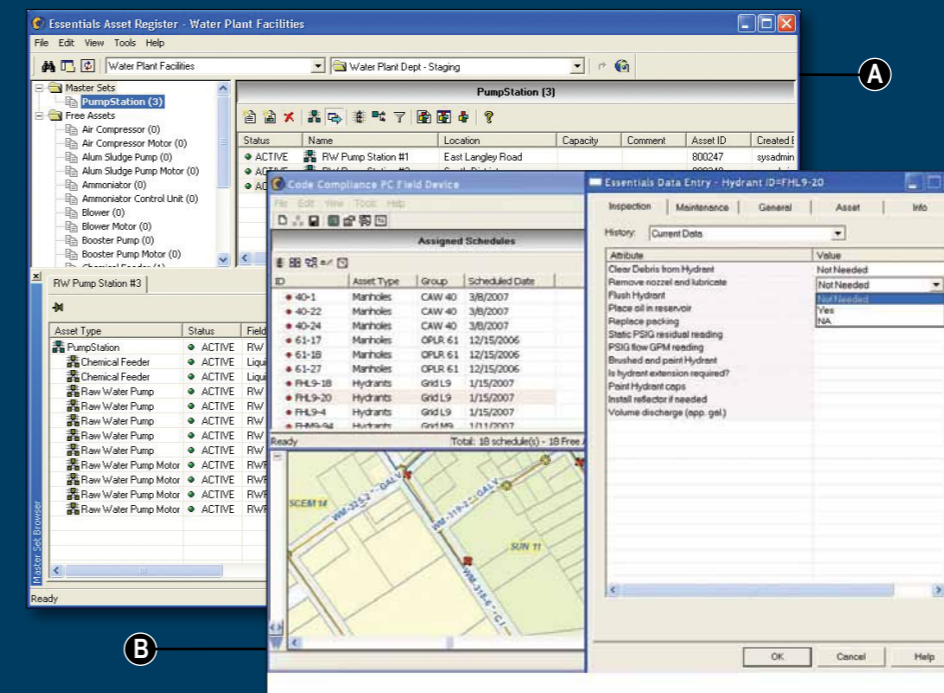
A solution that delivers return-on-investment

With Essentials, you can reduce your company's cost of system ownership. Essentials delivers a single common system for tracking and scheduling all types of work so that you do not have to rely on multiple, specialized systems. Costs are reduced by slashing the maintenance and support and IT overheads associated with multiple systems. The common user interface for each asset solution reduces training costs.

Asset Register

Essentials offers Asset Register, a separate primary asset data source module that allows you to organize and manage your network assets in one centralized location. The Asset Register application lets you view, edit, validate and update your assets or group them together according to common characteristics, such as asset type or location. Asset Register can also serve as a repository for storing and maintaining asset data before acquiring a GIS system. Those with GIS systems will find value in Asset Register's ability to store specific equipment data, such as detailed pump designs, historical meter readings and other data not typically stored within your GIS.

Powerful features meet ease-of-use



A Flexible interactivity and integration Our open architecture easily facilitates the integration with existing work management systems or customer information systems. The **Asset Register** module features the same look and feel of the main Essentials application to improve usability and allow for easy cross-training.

B Field mobility Supply data to and collect data from your field operators via the integrated field component running on field laptops or personal data assistants. Validation is performed remotely in the field. Data collection has never been so easy!

Robust system features

Essentials delivers out-of-the-box ESRI® ArcGIS™ integration for managing field collection activities for assets defined in your GIS. By working with your GIS, Essentials eliminates costly, redundant data maintenance tasks. Essentials' open architecture also facilitates integration with other work management and customer information systems.

Automated inspection date calculation and scheduling

Essentials automates all of your inspection date calculations and allows you to view assets and their respective scheduling information sorted by type, location and status. It also provides warnings to notify you when activities are behind schedule.

Inspection results monitoring

Essentials keeps your best interests in mind by monitoring the results of inspections and providing alerts for abnormal conditions discovered in the field. Depending on the severity of the alert, follow up inspection and maintenance activities can then be scheduled and monitored.

Enterprise database

Essentials relies on a robust, multi-user database. This common database offers a central location for database administration and backup, and facilitates data sharing across the enterprise.

Robust resource management

Essentials maintains and manages both user and field device assignments. Schedules and activities can be easily grouped and re-assigned from one resource to another to ensure proper resource allocation and timely work completion. Re-assignments can either be permanent or performed on a one-time basis to accommodate individuals that may have fallen behind schedule or are temporarily unable to perform work due to illness, vacations or other circumstances.

Extensible reporting

Essentials offers pre-defined reports and summaries that allow you to review inspection and maintenance activities and monitor upcoming assignments and workloads. Clients can easily extend the reporting capability through the use of an industry standard report building environment.

Flexible and configurable

Essentials is flexible, open and scalable. The solution can be configured to accommodate almost any business process involving cyclical inspection activities. Inspection frequencies, electronic form contents and device definitions are all defined via database parameters allowing Essentials to be configured for each individual utility's business practice without the need for costly software customisations.