

## By air

From the airport, take the S1 railway towards Hamburg-Ohlsdorf. At Ohlsdorf change for the U1 underground railway towards Farmsen / Großhansdorf / Ohlstedt and get off at Meißberg.

Germanischer Lloyd (GL) is a technical advisor and trusted partner for assurance, consulting and classification. The GL Group provides a unique blend of technical expertise, business understanding and client relationships within three major business segments: Maritime, Oil & Gas and Renewables.

The global network consists of more than 200 locations in 80 countries. GL's head office is located in Hamburg.

### Germanischer Lloyd Group

#### Head Office

Brooktorkai 18, 20457 Hamburg, Germany

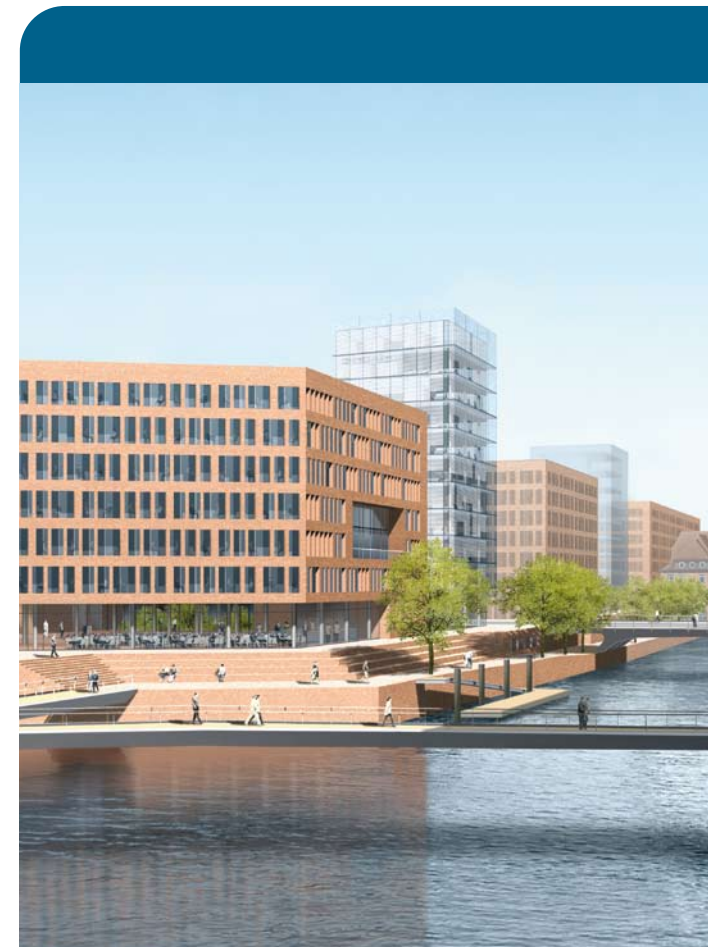
Phone: +49 40 36149-0

Fax: +49 40 36149-200

headoffice@gl-group.com

www.gl-group.com

www.gl-nobledenton.com



# How to find the GL Head Office in Hamburg



## By car

### Flensburg A7/E45:

Take the Hamburg-Stellingen exit (26) via Kieler Straße and the B4 towards Zentrum/HafenCity

### Lübeck A1/E22:

At the Hamburg Ost junction, head towards Jenfeld and the Horner Kreisel (exit 1), then head towards Zentrum/Hafen City

### Bremen A1/E22:

At the Hamburg Süd junction, follow the A255 to HH-Veddel and take the B4/B75 over the Elbe bridges (Elbbrücken) towards Zentrum/HafenCity

### Berlin A24/E26:

At the Hamburg Ost junction, continue on the A24 towards the Horner Kreisel (exit 1), then head towards Zentrum/HafenCity

### Hannover A7/E45:

At the Horster Dreieck junction, take the A1 towards Hamburg Süd, then follow the A255 to HH-Veddel and take the B4/B75 over the Elbe bridges (Elbbrücken) towards Zentrum/HafenCity

**Please note that you should approach GL from a westerly direction (Am Sandtorkai/Osakaallee) to enter our underground parking. There are designated parking spaces available for our customers. Just follow the signs.**

## By train

At the main station (Hauptbahnhof), take the U1 underground railway towards Ochsenzoll/Norderstedt Mitte and get off at Meißberg.

## By ferry

Take the line 62, Finkenwerder–Sandtorhöft and get off at Sandtorhöft. Take a stroll through Hamburg's "Speicherstadt", along "Am Sandtorkai" until you reach the "Brooktorkai" where the GL head office is located.