

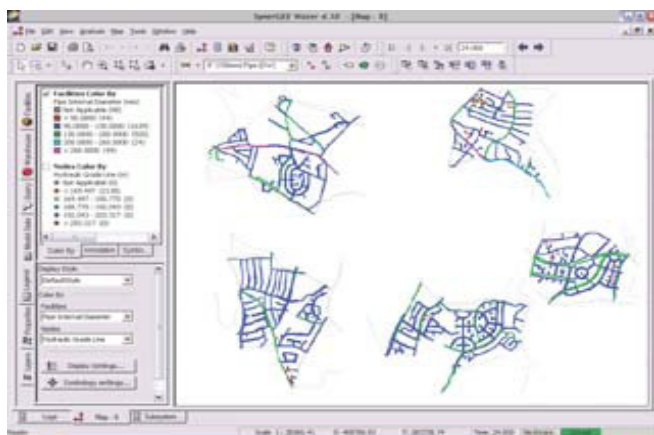
SynerGEE Water Subsystem Management Module

The SynerGEE® Water Subsystem Management Module (SMM) offers enhanced extract, merge and skeletonization capabilities.

Extract and Merge Subsystems

Models may be extracted hydraulically based on existing subsystems or spatially based on geographic area or a selected group of nodes and facilities. Extracting and saving subsystems to separate files makes updating your model fast and easy and enables you concentrate on specific areas of your model that need attention.

The updated tool also enables you to automatically account for time-varying boundary conditions during extractions allowing accurate zonal models to be quickly created from a master model.



Create a Skeletal Model

Skeletonization allows you to develop a simplified or strategic model from a detailed model to help you save valuable time and focus only on critical model features. SMM uses criteria you define to automatically determine which facilities are insignificant to the overall system hydraulics, excludes them from the skeletal model being created and automatically reallocates upstream model demands. Skeletonization has been enhanced to further simplify models by identifying and removing low and no flow model loops.

SMM offers a number of modeling enhancements allowing you to:

- Extract individual modeled zones from a master model to avoid processing a large model
- Merge two or more zonal models together to create a new master model
- Reduce the level of graphical and hydraulic model detail to create a simplified model version

GL Industrial Services

Holywell Park, Ashby Road, Loughborough

Leicestershire LE11 3GR, UK

Phone: +44 1509 282000

Fax: +44 1509 282525

water@gl-group.com · www.gl-group.com/water